

KINGFISHER DETECTIVES



LET'S GO ON AN ADVENTURE!

IT'S TIME TO PUT YOUR
DETECTIVE SKILLS TO THE TEST.

IN SANTA MARTA DE TORMES,
8 MYSTERIOUS CHARACTERS
ARE HIDING!

**YOUR MISSION
IS TO FIND
THEM ALL!**

HERE ARE THE **CLUES** YOU'LL GET
ALONG THE WAY:



A **drawing** of each character.

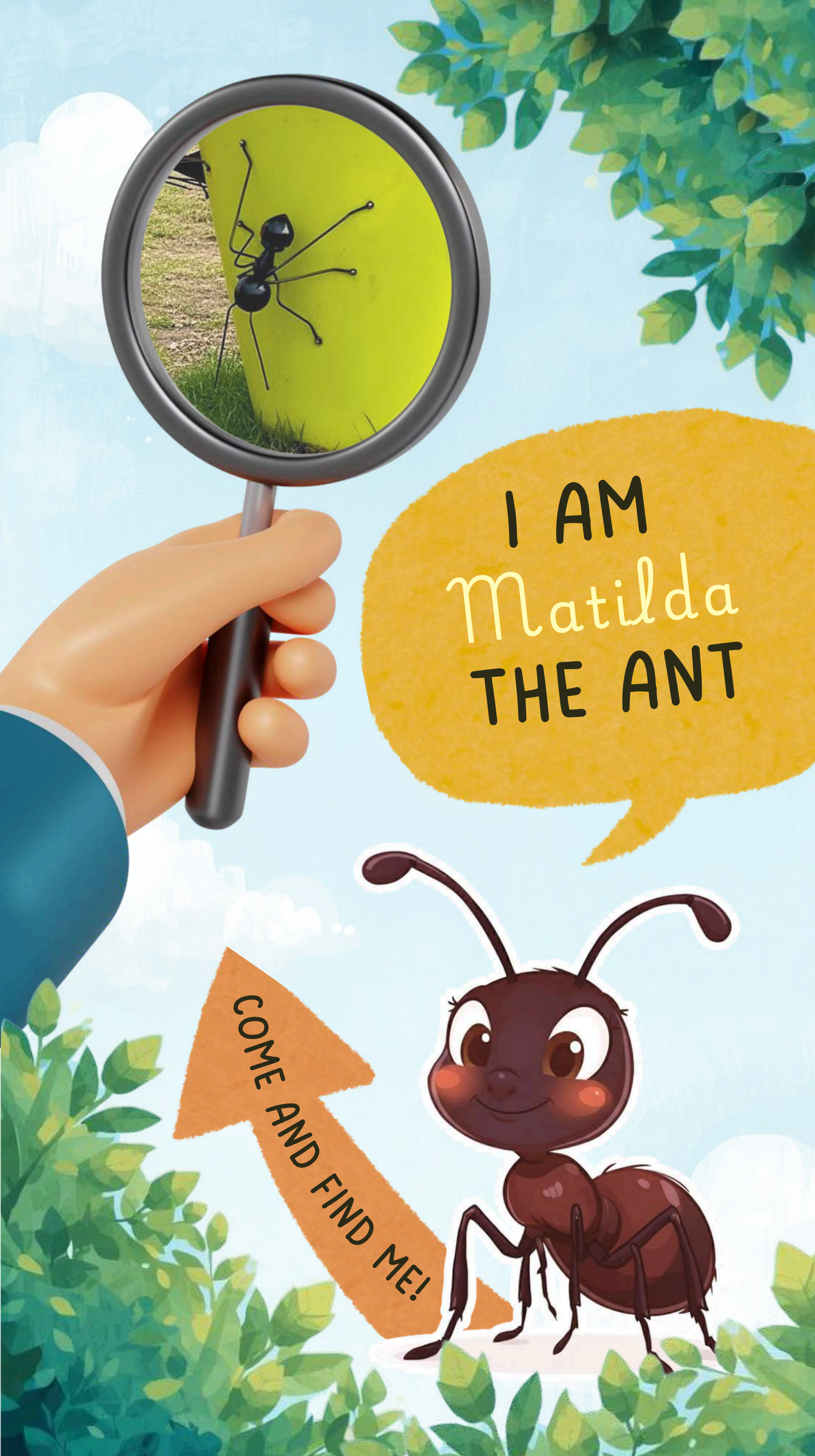


A **real photo** of where they're
hiding.

GOOD LUCK, DETECTIVE!



**TURISMO DE
SANTA MARTA
DE TORMES
SALAMANCA**



I AM
Matilda
THE ANT

COME AND FIND ME!



SOTO ISLAND

🌸 You'll find me next to the Interpretation Centre, hiding among the colourful flower pots!



I AM THE
blue
DRAGONFLY

CAN YOU
SPOT ME?



SOTO ISLAND

✨ Look up! I'm on the front of the Interpretation Centre, right above the entrance!




WE'RE PENCIL
AND ERASER!





SOTO ISLAND

 You'll find us next to the playground, by the footbridge that connects to Church Square.



9
CAN YOU
FIND ME?

I'M THE
German
SHEPHERD





MURAL 'NO TO ABANDONMENT'

🐾 I'm on Calle Ricardo Marcos,
between Plaza de España and
Avenida de Madrid.



CAN YOU GUESS
WHERE I AM?

I AM THE
magic
DOOR





'THE ENCHANTED SOTO ISLAND' SPACE

✂ I'm on Calle Ricardo Marcos,
just across from Santa Marta de
Tormes Town Hall!



I'M THE
reading
CROCODILE

CAN YOU
SPOT ME?





AWARD-WINNING GARAGE FROM THE URBAN ART FESTIVAL

 You'll find me on
Calle Félix de Montemar.



I AM
Maya
THE BEE

COME AND FIND ME!



MURAL 'MILLENNIAL GENERATION'

🐝 You'll spot me on Paseo
Profesor Enrique Tierno Galván.



CAN YOU GUESS
WHERE I AM?

IT'S ME
Bob
THE MINION





MINION

♥ I'm on Calle Villalar,
just by the Sociocultural Building!



SEE YOU
NEXT TIME
DETECTIVE!



📷 @turismosantamartadetormes

www.turismosantamartadetormes.com

audace
tics